



# 1" & 2.5"

## MAIN VAULT DOOR SERIES



PRIVACY • SECURITY • ASSET



STRENGTH



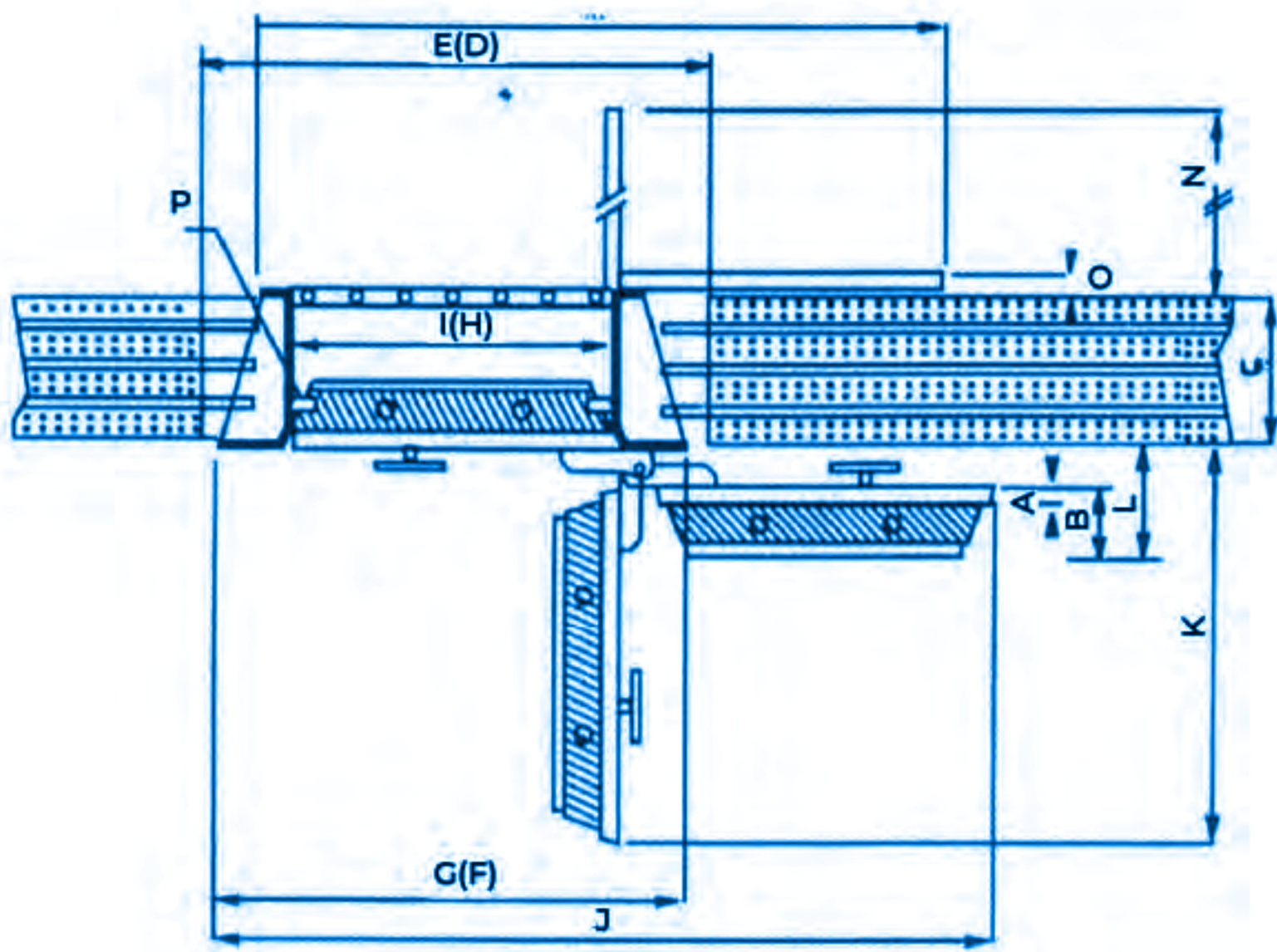
CUSTOMER SERVICE



WORLD CLASS



# SPECIFICATIONS



Ref	Specifications (mm)	1" Main Vault Door	2.5" Main Vault Door
A	Barrier Material Thickness	25	70
B	Overall Door Thickness	162	182
C	Recommended Wall Thickness	200	200
(D)	Wall Opening Required - Height	2300	2300
E	Wall Opening Required - Width	1400	1400
(F)	Overall Height of Frame	2169	2170
G	Overall Width of Frame	1190	1206
(H)	Clear Opening - Height	2000	2000
I	Clear Opening - Width	900	900
J	Overall Width When Door Open at 180 Degree	2120	2148
K	Projection When Door Open at 90 Degree	1037	1050
L	Projection When Door Open at 180 Degree	237	256
M	Overall Width of Gate When Open at 180 Degree	2044	2044
N	Projection of Gate When Open at 90 Degree	975	975
O	Projection of Gate When Open at 180 Degree	65	71
	Moving Bolts / Bolts Diameter 38 mm	11 Sets	11 Sets
	Fixed Bolts / Bolts Diameter 38 mm	7 Sets	7 Sets
	Weight +/- 10 %	620 kg	660 kg

# QUALIFICATIONS



**SSI (Structural Steel Integration)**  
Crafted from reinforced thick steel and seamlessly welded, boasts a strong unified structure that is highly resistant to forced entry and nearly indestructible.



**XLarge Bolts**  
Equipped with 38 mm diameter bolts and rust-resistant coating, these locks strengthen the door panel and protect against prying and cutting, enhancing security.



**CS350 Barrier Material**  
The CS350-infused material boasts fire resistance, anti-drill strength, and extra thickness for superior protection against heat, impact, and fire.



**Multi Protection Door**  
The door features 162 mm or 182 mm thickness, reinforced with 25 mm or 70 mm alloy steel and fire-retardant features, combines drill resistance and reinforced hinges for enhanced security.



**S&G Combination Lock**  
The UL-certified S&G combination locks feature a 4-digit code with a 100 million possible combinations and include a combination ring to deter code theft.



**8 Lever Key Lock**  
This lock has an 8-lever, double-bit system and comes with a durable, hard-to-copy metal key, increasing security against counterfeiting.



**Automatic Relock System**  
The safe has an automatic relock system with safety glass and a solid code mechanism to prevent tampering, ensuring reliable security.



**Drill Protection Alloy Steel**  
With a puncture-resistant steel plate made from a custom alloy, it protects the key code mechanism, keys, and all points.



**High Quality Paint**  
The door has been polished and treated for rust prevention before being painted in an automotive oven to ensure a long-lasting and shiny finish.